

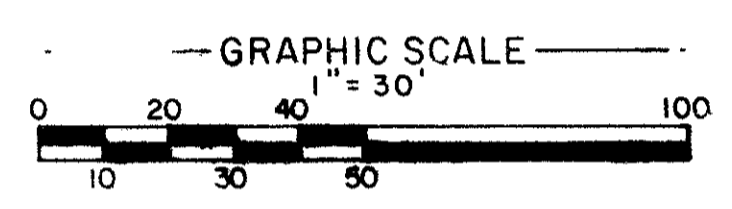
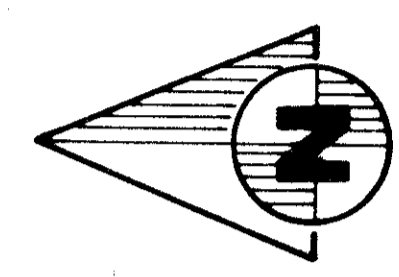
# A PLANNED UNIT DEVELOPMENT ROSEDALE AT INDIAN SPRING

BEING A REPLAT OF TRACT R-2, AND LOTS 1 AND 2 OF BLOCK ONE, OF INDIAN SPRING PLAT NO. 1, AS RECORDED IN PLAT BOOK 31, Pp. 43-47 (INCL.), PUBLIC RECORDS PALM BEACH COUNTY, FLORIDA.  
JANUARY, 1977

# 194

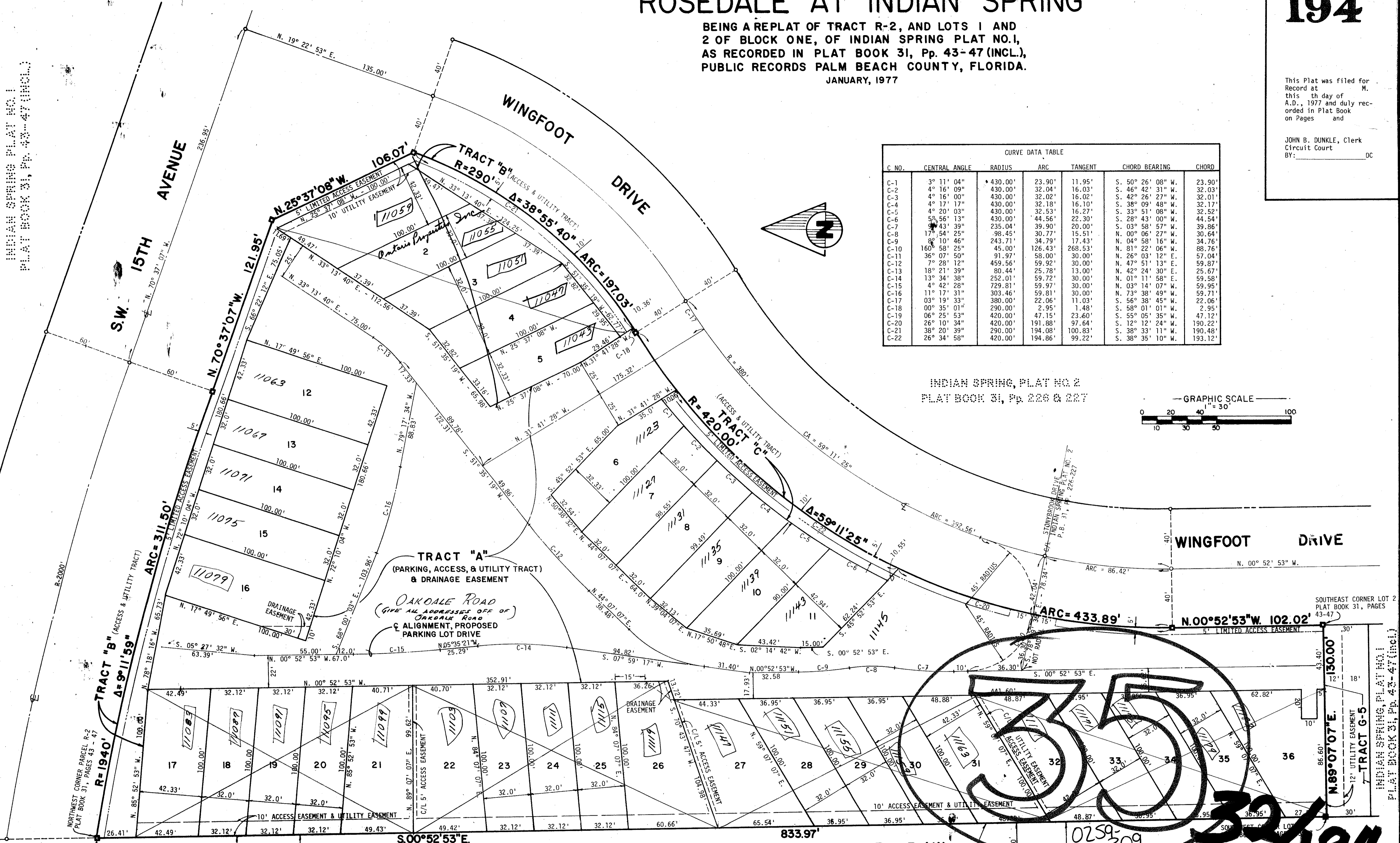
This Plat was filed for Record at M. this th day of A.D., 1977 and duly recorded in Plat Book on Pages and  
JOHN B. DUNKLE, Clerk Circuit Court BY: \_\_\_\_\_ DC

CURVE DATA TABLE						
C. NO.	CENTRAL ANGLE	RADIUS	ARC	TANGENT	CHORD BEARING	CHORD
C-1	3° 11' 04"	430.00'	23.90'	11.95'	S. 50° 26' 08" W.	23.90'
C-2	4° 16' 09"	430.00'	32.04'	16.03'	S. 46° 42' 31" W.	32.03'
C-3	4° 16' 00"	430.00'	32.02'	16.02'	S. 42° 26' 27" W.	32.01'
C-4	4° 17' 17"	430.00'	32.18'	16.10'	S. 38° 09' 48" W.	32.17'
C-5	4° 20' 03"	430.00'	32.53'	16.27'	S. 33° 51' 08" W.	32.52'
C-6	5° 56' 13"	430.00'	44.56'	22.30'	S. 28° 43' 00" W.	44.54'
C-7	9° 43' 39"	235.04'	39.90'	20.00'	S. 03° 58' 57" W.	39.86'
C-8	17° 54' 25"	98.45'	30.77'	15.51'	N. 00° 06' 27" W.	30.64'
C-9	8° 10' 46"	243.71'	34.79'	17.43'	N. 04° 58' 16" W.	34.76'
C-10	160° 58' 25"	45.00'	126.43'	268.53'	N. 81° 22' 06" W.	88.76'
C-11	36° 07' 50"	91.97'	58.00'	30.00'	N. 26° 03' 12" E.	57.04'
C-12	7° 28' 12"	459.56'	59.92'	30.00'	N. 47° 51' 13" E.	59.87'
C-13	18° 21' 39"	80.44'	25.78'	13.00'	N. 42° 24' 30" E.	25.67'
C-14	13° 34' 38"	252.01'	59.72'	30.00'	N. 01° 11' 58" E.	59.58'
C-15	4° 42' 28"	729.81'	59.97'	30.00'	N. 03° 14' 07" W.	59.95'
C-16	11° 17' 31"	303.46'	59.81'	30.00'	N. 73° 38' 49" W.	59.71'
C-17	03° 19' 33"	380.00'	22.06'	11.03'	S. 56° 38' 45" W.	22.06'
C-18	00° 35' 01"	290.00'	2.95'	1.48'	S. 58° 01' 01" W.	2.95'
C-19	06° 25' 53"	420.00'	47.15'	23.60'	S. 55° 05' 35" W.	47.12'
C-20	26° 10' 34"	420.00'	191.88'	97.64'	S. 12° 12' 24" W.	190.22'
C-21	38° 20' 39"	290.00'	194.08'	100.83'	S. 38° 33' 11" W.	190.48'
C-22	26° 34' 58"	420.00'	194.86'	99.22'	S. 38° 35' 10" W.	193.12'



INDIAN SPRING, PLAT NO. 2  
PLAT BOOK 31, Pp. 226 & 227

INDIAN SPRING PLAT NO. 1  
PLAT BOOK 31, Pp. 43-47 (INCL.)



35

32/194

35/45/H2

LAKE WORTH DRAINAGE DISTRICT EQUALIZING CANAL E-3 R/W

## ROSEDALE AT INDIAN SPRING

NORTH-SOUTH 1/4 SECTION LINE  
SEC. 35, TWP. 45 S., RGE. 42 E.

THIS INSTRUMENT WAS PREPARED BY ROBERT J. WHIDDEN IN THE OFFICES OF BENCH MARK AND SURVEYING AND MAPPING, INC., 2300 PALM BEACH LAKES BLVD., SUITE 109, WEST PALM BEACH, FLORIDA, PHONE 689-2111.

WANTMAN & ASSOCIATES, INC.

CONSULTING ENGINEERS  
WEST PALM BEACH FLORIDA

BENCH MARK

and surveying and mapping, inc.

NO.	DATE	DESCRIPTION	BY	FIELD BOOK NO.	PG.	DATE	JOB NO.	SHEET
						JAN. 1977		2
REVISIONS								